

## STRUCTURED TO THE DETAIL

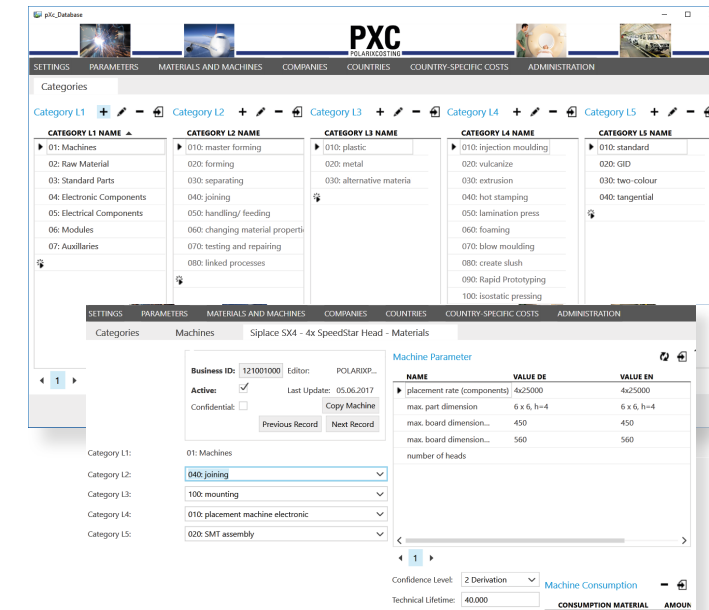
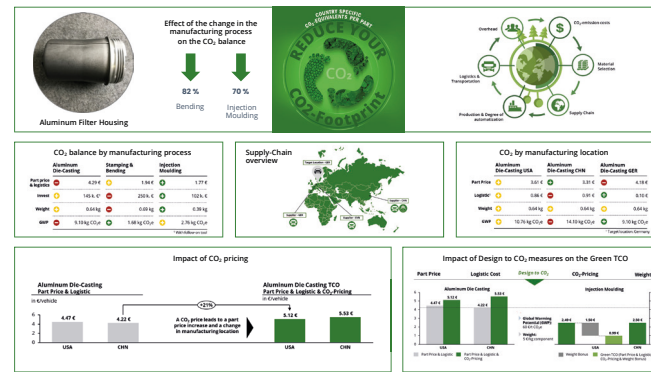
PXC provides costings with full transparency

## GLOBAL DATA

Easy filters and search functions

With POLARIXCOSTING (PXC), a company's product costs and CO<sub>2</sub> emissions can be simulated and presented transparently.

PXC provides a detailed breakdown of CO<sub>2</sub> emissions from raw materials through manufacturing and logistics to the final product using its integrated CO<sub>2</sub> calculator.



## QUICK, FLEXIBLE, AND NEGOTIATION-READY

POLARIXCOSTING – the costing software with integrated expert-know-how and maximum costs transparency.

**PXC**  
POLARIXCOSTING

## POLARIXCOSTING - Structuring your journey through the world of costs

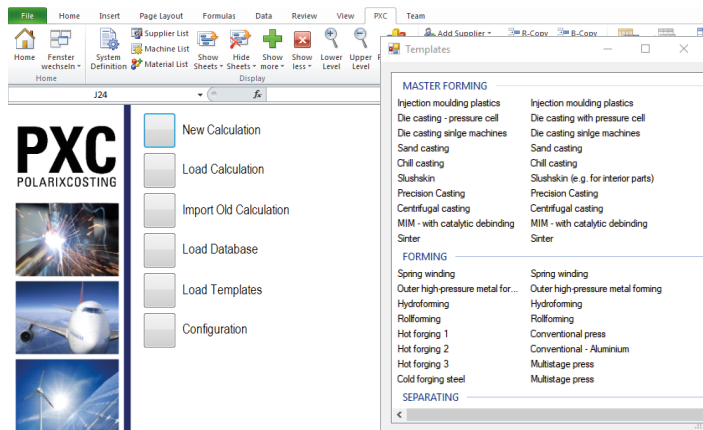
- Modular processes
- Technology templates
- Costs transparency using bottom-up standards
- Supply Chain & CO<sub>2</sub> analysis
- Make-or-buy-decisions
- Flexible overhead calculation
- Country-specific productivity rates
- Materials, machines, and country specific data
- Up-to-date, validated values
- Regular updates

## Successfully calculate your costs and CO<sub>2</sub> emissions with our tried and tested tool!

- User-friendly interface
- Quick results thanks to integrated technology templates
- Integrated CO<sub>2</sub> calculator
- Applicability across a range of industries
- Offline functionality with synchronisation options
- Flexible methods for data exchange (Cost-break-down generator)
- Easy report generation (Report generator)
- Interoperability with ERP systems possible
- Compatibility with Microsoft Office

# FAST AND DETAILED

Comprehensive technology templates



**PXC** offers a range of templates for almost every standard technology. Use the combined know-how of POLARIXPARTNER consultants to compile reliable, negotiation-ready costings with just a few basic inputs.

# RELIABLE AND FLEXIBLE

A modular software solution for your company

Building on the Microsoft standard and based on an SQL database, the calculation results are made available transparently and comprehensibly in Excel via a COM add-in.

**PXC** displays any number of production sites in its supply chain map and allows the cost analyst to simulate different combinations of logistically relevant production sites.

Focus on work processes and materials. **PXC** does the rest and automatically adds necessary data and calculations depending on the supply chain.

Decide on the structure of tomorrow's supply chain based on all relevant parameters - product, tooling, development and logistics costs as well as CO<sub>2</sub> emissions.

# AN EYE ON THE FUTURE

Sector-specific solutions for your business



**POLARIXPARTNER GmbH**  
Graf-Siegfried-Str. 32  
54439 Saarburg • Germany  
Telephone: +49 6581 8290-0  
E-mail: [info@polarixpartner.com](mailto:info@polarixpartner.com)  
Web: [www.polarixpartner.com](http://www.polarixpartner.com)



AUTOMOTIVE  
INDUSTRY



MEDTECH AND  
PHARMA



AEROSPACE  
INDUSTRY



MECHANICAL  
AND ENERGY

# EVERY DETAIL COUNTS!

**PXC database**  
Labor rates, material data, machine data, general costs, country-specific structural costs etc.  
CO<sub>2</sub> equivalents for materials, consumables, machinery and tools



**CO<sub>2</sub> Emissions**  
Material consumption, manufacturing & logistics emissions



**Product costs**  
Material, process, overhead costs etc.



**Tooling costs**  
Casting, cutting/stamping, bending tools etc.



**Development costs**  
Mechanics, electronics, software etc.



**Logistic costs**  
Packaging, transport (air, water, road), customs etc.

# THE GUIDING STAR FOR THE MANUFACTURING INDUSTRY



POLARIXPARTNER is the management consultancy for the manufacturing industry.

As industry insiders with many years of experience, we guide you on your way to success, just as the North Star, Polaris, has offered generations of seafarers orientation. Our approach is holistic, our philosophy focussed on implementation: we analyse and strategically evaluate your core processes while remaining active on your shop floor to make sure that optimal improvements are implemented up and down your value creation chain.